

**KEY**

- Application boundary
- Land in the ownership of the applicant which is outside the application site  
Peabody Freehold Title (NGL805622)

Application boundary area: 4.16 Hectares

0 1m 2m 5m 10m

When this drawing is issued in uncontrolled CAD format it will be accompanied by a PDF version and is issued to enable the recipient to prepare their own documents / models / drawings for which they are solely responsible. The recipient should report all drawing errors, omissions and discrepancies to the architect. All dimensions should be checked on site by the contractor and such dimensions shall be the contractor's responsibility.

P01	01/11/2021	PLANNING
REV	DATE	

**NOTE**

Allford Hall Monaghan Morris Limited accepts no responsibility or liability for:-

- any use of this drawing by parties other than the party for whom it was prepared or for purposes other than those for which it was prepared
- any alterations or additions to or discrepancies arising out of changes to the background information on which the drawings are based that was current at the time of issue, and which occur to that information after it has been issued by AHMM
- any loss or degradation of the information held in this drawing resulting from the translation from the original file format to any other file format or from the recipient's reading of it in any other programme or any version of the programme other than that which was used to prepare it
- the accuracy of survey information provided by others or for any costs, claims, proceedings and expenses arising out of reliance on such information
- any scaling from this drawing other than by the local planning authority solely for the purposes of the planning application to which it relates

**LOCATION**

**ALLFORD HALL MONAGHAN MORRIS**

ARCHITECTS LTD  
 MORELANDS, 5-23 OLD STREET LONDON EC1V 9HL  
 TEL 020 7251 5261 FAX 020 7251 5123 WEB WWW.AHMM.CO.UK

job title  
**PROJECT HOLLOWAY**

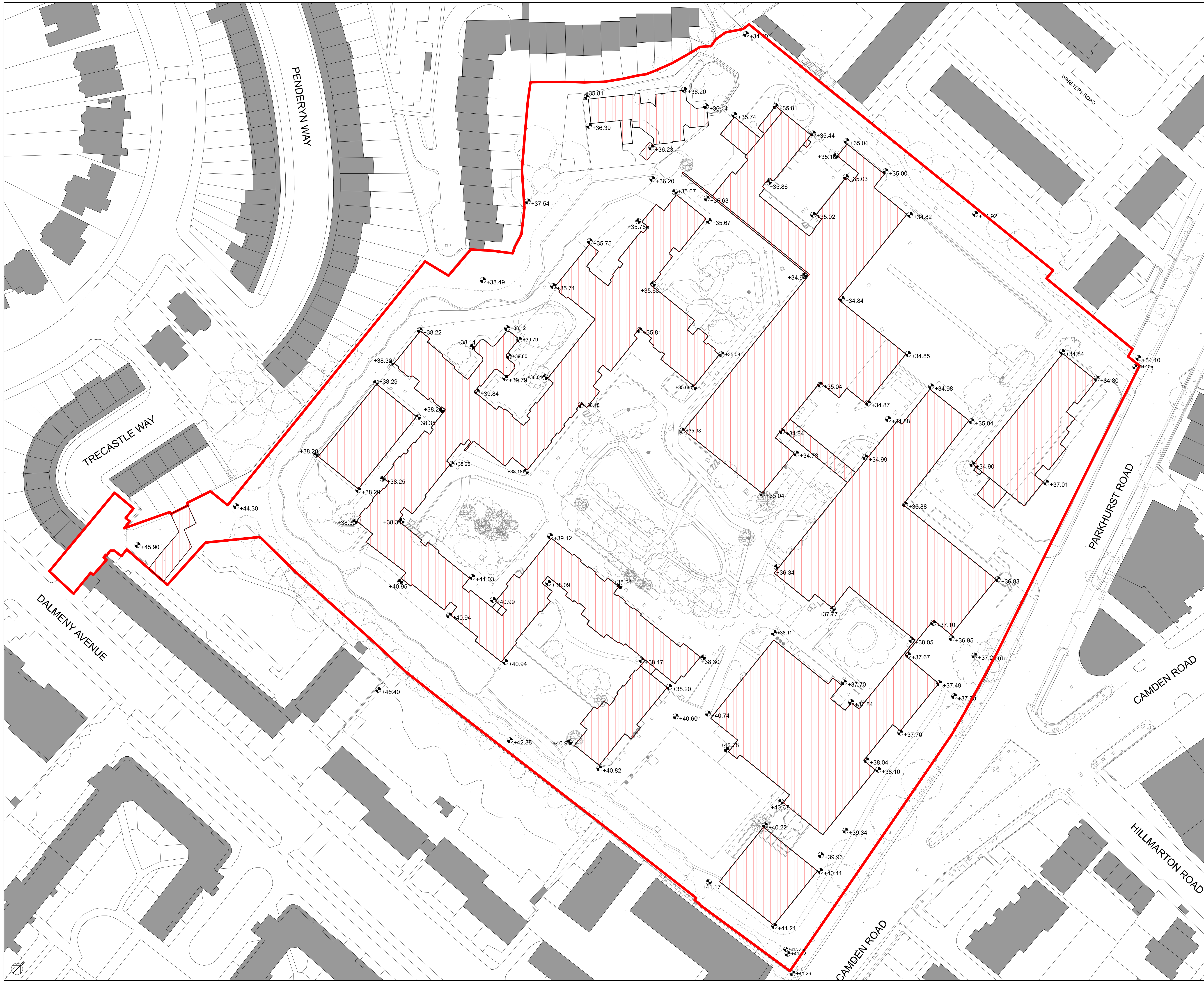
drawing title / location  
**LOCATION PLAN**

drawn by	checked	scale	status
AC	LL	1:1250@A1; 1:2500@A3	PLANNING
project	zone	source	classification drawing no. revision
17105	0	-	(00)_P001 P01









**KEY**

- Application boundary
- Buildings to be demolished

0 1m 2m 5m 10m

Information based upon Point 2 Survey May 2019.  
Drawings LS2208/T/3D/01 to 16, Revision A

P01	01/11/2021	PLANNING
REV	DATE	

**NOTE**

When this drawing is issued in uncontrolled CAD format it will be accompanied by a PDF version and is issued to enable the recipient to prepare their own documents / models / drawings for which they are solely responsible. The recipient should report all drawing errors, omissions and discrepancies to the architect. All dimensions should be checked on site by the contractor and such dimensions shall be the contractor's responsibility.

Allford Hall Monaghan Morris Limited accepts no responsibility or liability for:-  
 - any use of this drawing by parties other than the party for whom it was prepared or for purposes other than those for which it was prepared  
 - any alterations or additions to or discrepancies arising out of changes to the background information on which the drawings are based that was current at the time of issue, and which occur to that information after it has been issued by AHMM  
 - any loss or degradation of the information held in this drawing resulting from the translation from the original file format to any other file format or from the recipient's reading of it in any other programme or any version of the programme other than that which was used to prepare it  
 - the accuracy of survey information provided by others or for any costs, claims, proceedings and expenses arising out of reliance on such information  
 - any scaling from this drawing other than by the local planning authority solely for the purposes of the planning application to which it relates

**LOCATION**

**ALLFORD HALL MONAGHAN MORRIS**  
 ARCHITECTS LTD  
 MORELANDS, 5-23 OLD STREET LONDON EC1V 9HL  
 TEL 020 7251 5261 FAX 020 7251 5123 WEB WWW.AHMM.CO.UK

job title

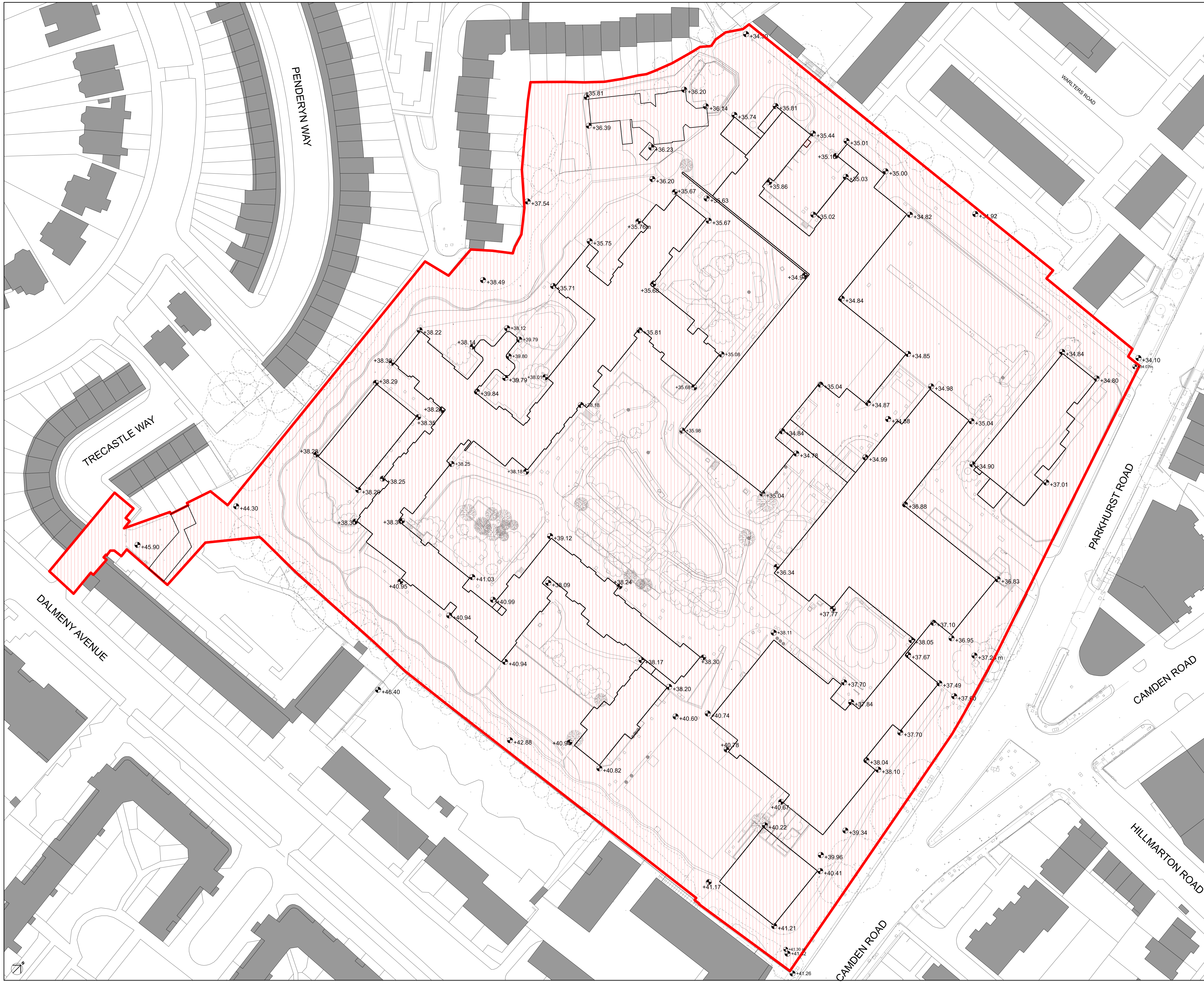
**PROJECT HOLLOWAY**

drawing title / location

**EXISTING SITE  
BUILDINGS TO BE DEMOLISHED**

drawn by	checked	scale	status
AC	LL	1:500@A1; 1:1000@A3	PLANNING
project	zone	source	classification
17105	0	(01)_P110	P01





**KEY**

- Application boundary
- PHASE 0

0 1m 2m 5m 10m

Information based upon Point 2 Survey May 2019.  
Drawings LS2208/T/3D/01 to 16, Revision A

P01	01/11/2021	PLANNING
REV	DATE	

**NOTE**

When this drawing is issued in uncontrolled CAD format it will be accompanied by a PDF version and is issued to enable the recipient to prepare their own documents / models / drawings for which they are solely responsible. The recipient should report all drawing errors, omissions and discrepancies to the architect. All dimensions should be checked on site by the contractor and such dimensions shall be the contractor's responsibility.

Allford Hall Monaghan Morris Limited accepts no responsibility or liability for:-  
 - any use of this drawing by parties other than the party for whom it was prepared or for purposes other than those for which it was prepared  
 - any alterations or additions to or discrepancies arising out of changes to the background information on which the drawings are based that was current at the time of issue, and which occur to that information after it has been issued by AHMM  
 - any loss or degradation of the information held in this drawing resulting from the translation from the original file format to any other file format or from the recipient's reading of it in any other programme or any version of the programme other than that which was used to prepare it  
 - the accuracy of survey information provided by others or for any costs, claims, proceedings and expenses arising out of reliance on such information  
 - any scaling from this drawing other than by the local planning authority solely for the purposes of the planning application to which it relates

**LOCATION**

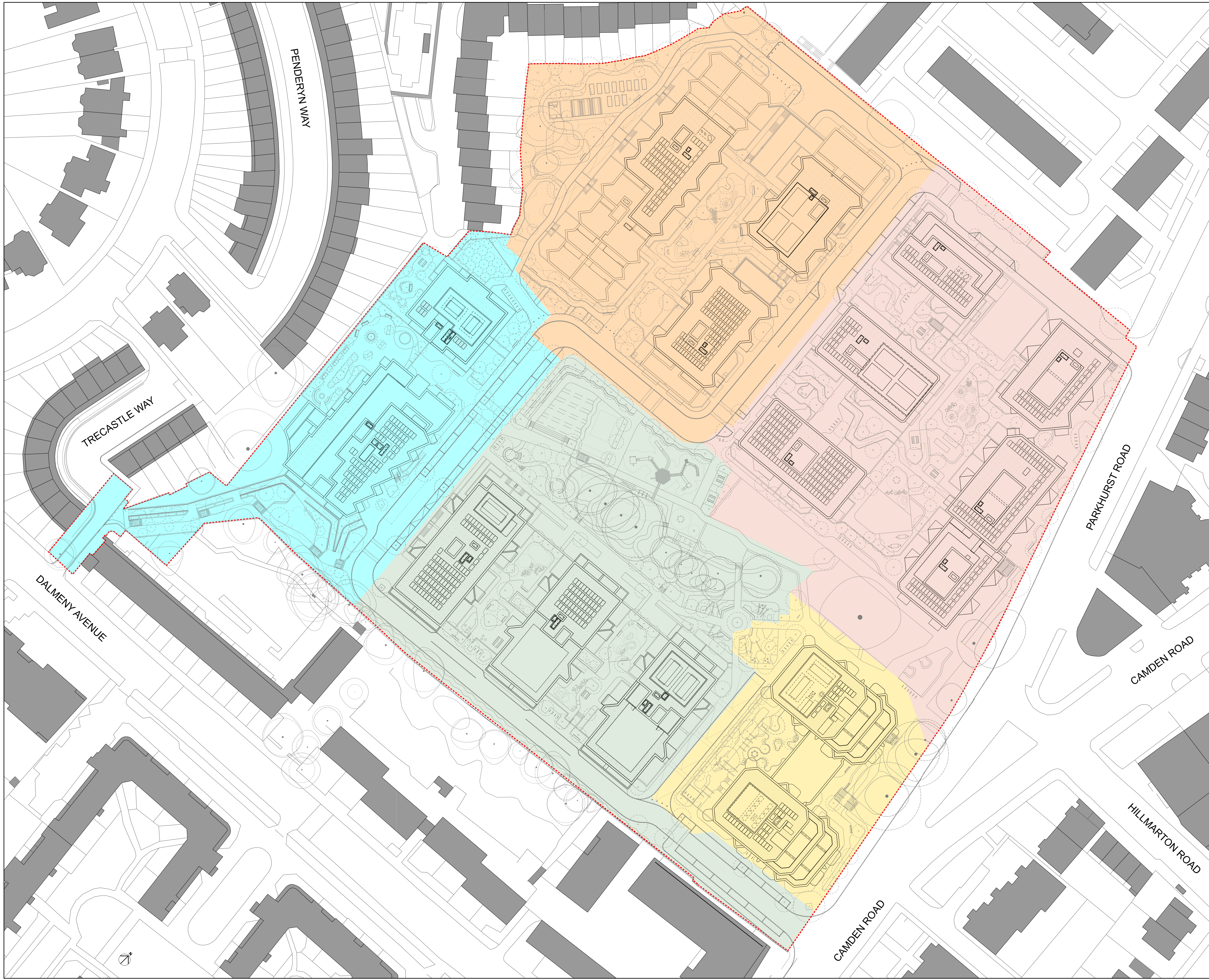
**ALLFORD HALL MONAGHAN MORRIS**  
 ARCHITECTS LTD  
 MORELANDS, 5-23 OLD STREET LONDON EC1V 9HL  
 TEL 020 7251 5261 FAX 020 7251 5123 WEB WWW.AHMM.CO.UK

job title  
**PROJECT HOLLOWAY**

drawing title / location  
**PHASING PLAN  
 DEMOLITION PHASE**

drawn by	checked	scale	status
AC	LL	1:500@A1; 1:1000@A3	PLANNING
project	zone	source	classification
17105	0		(01)_P150 P01





KEY

PHASE 1.1
PHASE 1.2
PHASE 1.3
PHASE 2
PHASE 3

P01	01/11/2021
REV	DATE

NOTE

When this drawing is issued in uncontrolled CAD format it will be accompanied by a PDF version and is issued to enable the recipient to prepare their own documents / models / drawings for which they are solely responsible. The recipient should report all drawing errors, omissions and discrepancies to the architect. All dimensions should be checked on site by the contractor and such dimensions shall be the contractor's responsibility.

Allford Hall Monaghan Morris Limited accepts no responsibility or liability for:-  
 - any use of this drawing by parties other than the party for whom it was prepared or for purposes other than those for which it was prepared  
 - any alterations or additions to or discrepancies arising out of changes to the background information on which the drawings are based that was current at the time of issue, and which occur to that information after it has been issued by AHMM  
 - any loss or degradation of the information held in this drawing resulting from the translation from the original file format to any other file format or from the recipient's reading of it in any other programme or any version of the programme other than that which was used to prepare it  
 - the accuracy of survey information provided by others or for any costs, claims, proceedings and expenses arising out of reliance on such information  
 - any scaling from this drawing other than by the local planning authority solely for the purposes of the planning application to which it relates

LOCATION

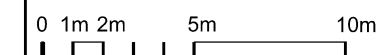
**ALLFORD HALL MONAGHAN MORRIS**  
 ARCHITECTS LTD  
 MORELANDS, 5-23 OLD STREET LONDON EC1V 9HL  
 TEL 020 7251 5261 FAX 020 7251 5123 WEB WWW.AHMM.CO.UK

job title  
**PROJECT HOLLOWAY**  
 drawing title / location  
**PHASING PLAN  
 CONSTRUCTION PHASES**

drawn by	checked	scale	status
AC	LL	1:500@A1; 1:1000@A3	PLANNING
project	zone	source	classification drawing no. revision
17105	0	-	(00)_P151 P01



KEY



Information based upon Point 2 Survey September 2019.  
 Drawings LS2208/E/01 to 54\_REVA

P01 01/11/2021 PLANNING

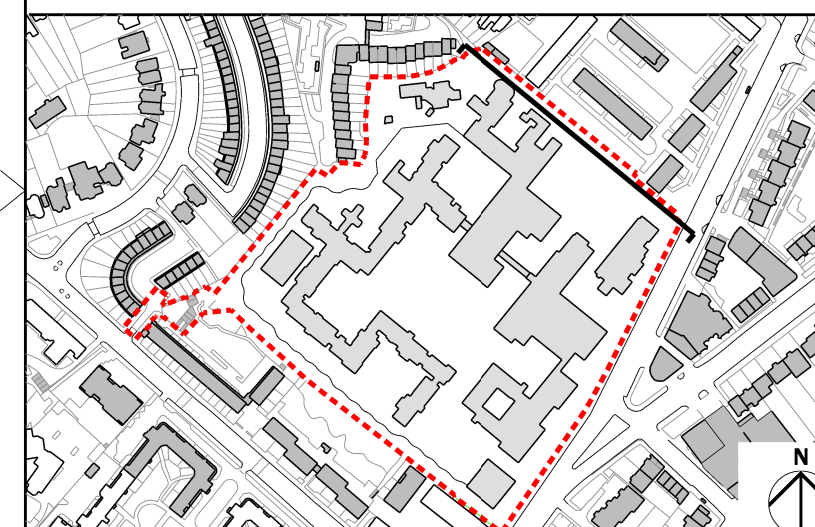
REV DATE

**NOTE**

When this drawing is issued in uncontrolled CAD format it will be accompanied by a PDF version and is issued to enable the recipient to prepare their own documents / models / drawings for which they are solely responsible. The recipient should report all drawing errors, omissions and discrepancies to the architect. All dimensions should be checked on site by the contractor and such dimensions shall be the contractor's responsibility.

Allford Hall Monaghan Morris Limited accepts no responsibility or liability for:-  
 - any use of this drawing by parties other than the party for whom it was prepared or for purposes other than those for which it was prepared  
 - any alterations or additions to or discrepancies arising out of changes to the background information on which the drawings are based that was current at the time of issue, and which occur to that information after it has been issued by AHMM  
 - any loss or degradation of the information held in this drawing resulting from the translation from the original file format to any other file format or from the recipient's reading of it in any other programme or any version of the programme other than that which was used to prepare it  
 - the accuracy of survey information provided by others or for any costs, claims, proceedings and expenses arising out of reliance on such information  
 - any scaling from this drawing other than by the local planning authority solely for the purposes of the planning application to which it relates

**LOCATION**



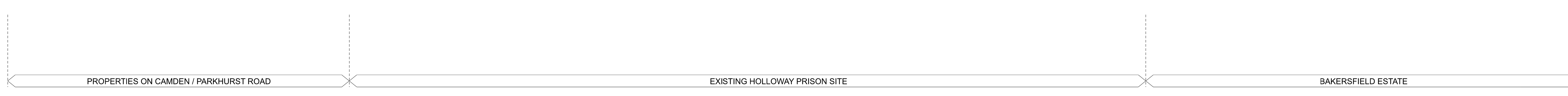
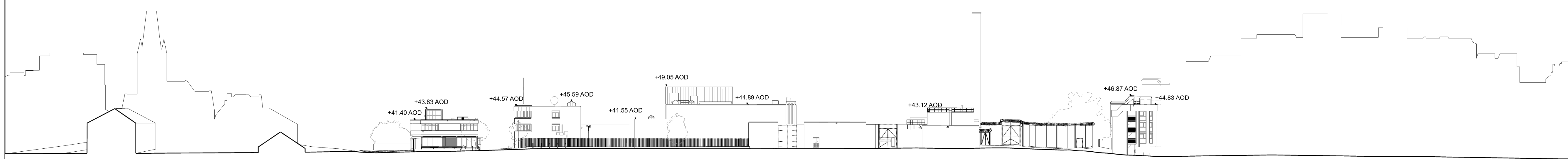
**ALLFORD HALL MONAGHAN MORRIS**  
 ARCHITECTS Ltd  
 MORELANDS, 5-23 OLD STREET LONDON EC1V 9HL  
 TEL 020 7251 5261 FAX 020 7251 5123 WEB WWW.AHMM.CO.UK

job title  
**PROJECT HOLLOWAY**

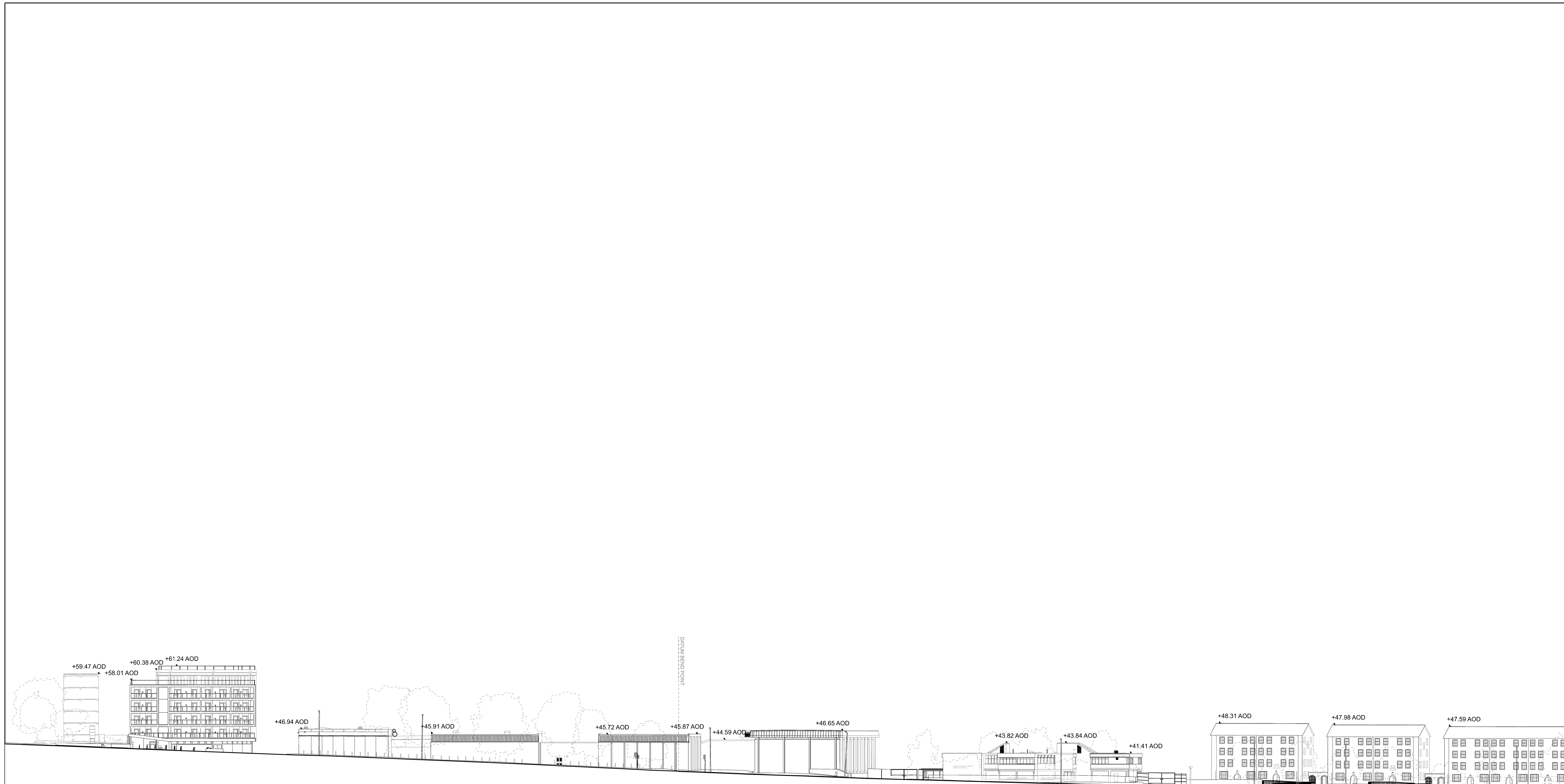
drawing title / location  
**EXISTING SITE  
 NORTHEAST ELEVATION - EXTERNAL**

drawn by	checked	scale	status
AC	LL	1:500@A1; 1:1000@A3	PLANNING

project	zone	source	classification	drawing no.	revision
17105	0	-	[01]	P200	P01







KEY

0 1m 2m 5m 10m

Information based upon Point 2 Survey September 2019.  
Drawings LS2208/E/01 to 54\_REVA

P01	01/11/2021	PLANNING
REV	DATE	

**NOTE**

When this drawing is issued in uncontrolled CAD format it will be accompanied by a PDF version and is issued to enable the recipient to prepare their own documents / models / drawings for which they are solely responsible. The recipient should report all drawing errors, omissions and discrepancies to the architect. All dimensions should be checked on site by the contractor and such dimensions shall be the contractor's responsibility.

Allford Hall Monaghan Morris Limited accepts no responsibility or liability for:-

- any use of this drawing by parties other than the party for whom it was prepared or for purposes other than those for which it was prepared
- any alterations or additions to or discrepancies arising out of changes to the background information on which the drawings are based that was current at the time of issue, and which occur to that information after it has been issued by AHMM
- any loss or degradation of the information held in this drawing resulting from the translation from the original file format to any other file format or from the recipient's reading of it in any other programme or any version of the programme other than that which was used to prepare it
- the accuracy of survey information provided by others or for any costs, claims, proceedings and expenses arising out of reliance on such information
- any scaling from this drawing other than by the local planning authority solely for the purposes of the planning application to which it relates



**LOCATION**

**ALLFORD HALL MONAGHAN MORRIS**  
ARCHITECTS Ltd  
MORELANDS, 5-23 OLD STREET LONDON EC1V 9HL  
TEL 020 7251 5261 FAX 020 7251 5123 WEB WWW.AHMM.CO.UK

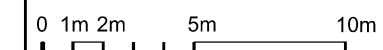
job title  
**PROJECT HOLLOWAY**

drawing title / location  
**EXISTING SITE  
SOUTHEAST ELEVATION - EXTERNAL**

drawn by	checked	scale	status
AC	LL	1:500@A1; 1:1000@A3	PLANNING
project	zone	source	classification drawing no. revision
17105	0	-	[01] P201 P01



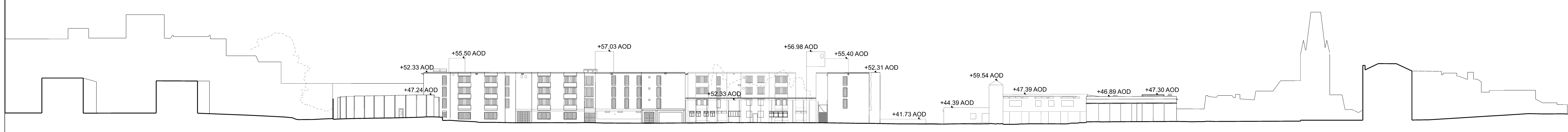
KEY



Information based upon Point 2 Survey September 2019.  
 Drawings LS2208/E/01 to 54\_REVA

P01 01/11/2021 INFORMATION

REV DATE

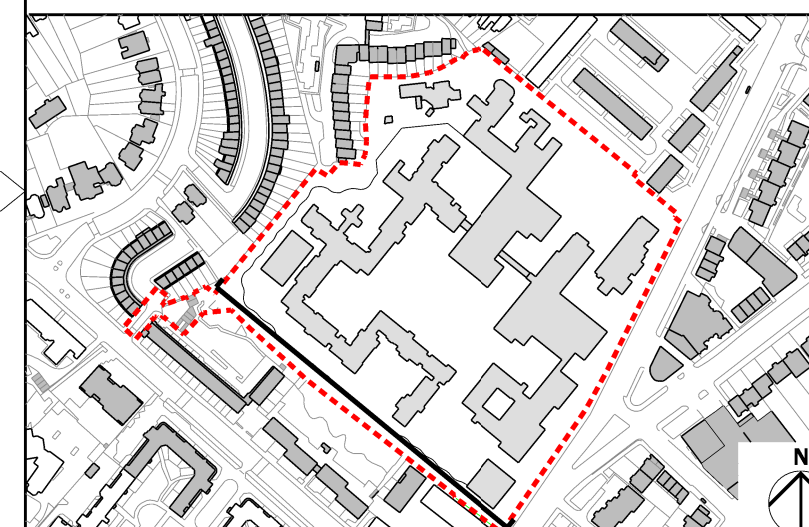


NOTE

When this drawing is issued in uncontrolled CAD format it will be accompanied by a PDF version and is issued to enable the recipient to prepare their own documents / models / drawings for which they are solely responsible. The recipient should report all drawing errors, omissions and discrepancies to the architect. All dimensions should be checked on site by the contractor and such dimensions shall be the contractor's responsibility.

Allford Hall Monaghan Morris Limited accepts no responsibility or liability for:-  
 - any use of this drawing by parties other than the party for whom it was prepared or for purposes other than those for which it was prepared  
 - any alterations or additions to or discrepancies arising out of changes to the background information on which the drawings are based that was current at the time of issue, and which occur to that information after it has been issued by AHMM  
 - any loss or degradation of the information held in this drawing resulting from the translation from the original file format to any other file format or from the recipient's reading of it in any other programme or any version of the programme other than that which was used to prepare it  
 - the accuracy of survey information provided by others or for any costs, claims, proceedings and expenses arising out of reliance on such information  
 - any scaling from this drawing other than by the local planning authority solely for the purposes of the planning application to which it relates

LOCATION



**ALLFORD HALL MONAGHAN MORRIS**  
 ARCHITECTS Ltd  
 MORELANDS, 5-23 OLD STREET LONDON EC1V 9HL  
 TEL 020 7251 5261 FAX 020 7251 5123 WEB WWW.AHMM.CO.UK

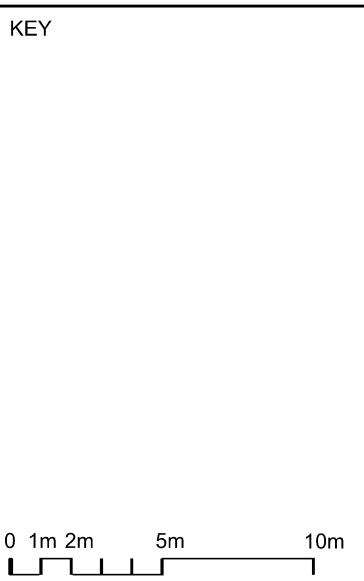
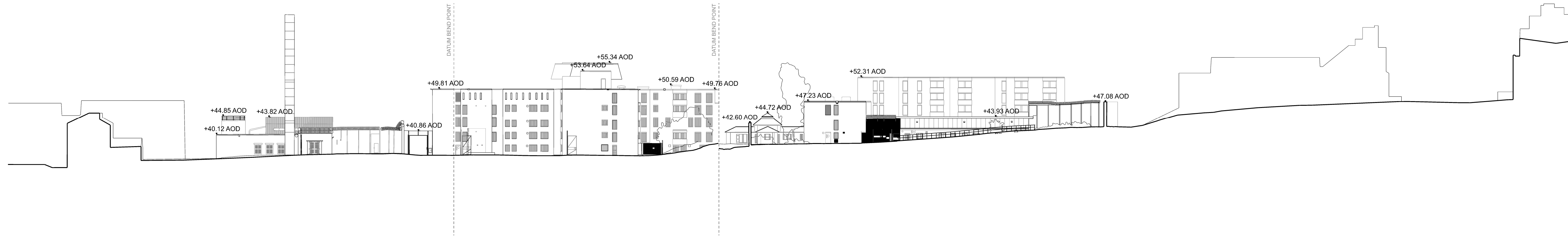
job title  
**PROJECT HOLLOWAY**

drawing title / location  
**EXISTING SITE  
 SOUTHWEST ELEVATION - EXTERNAL**

drawn by	checked	scale	status
AC	LL	1:500@A1; 1:1000@A3	PLANNING

project	zone	source	classification	drawing no.	revision
17105	0	-	[01]	P202	P01





Information based upon Point 2 Survey September 2019.  
Drawings LS2208/E/01 to 54\_REVA

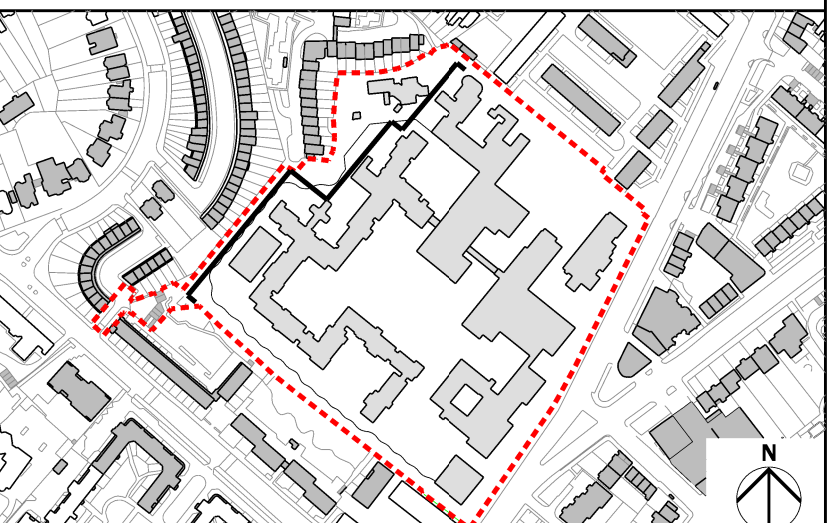
P01 01/11/2021 PLANNING

REV DATE

**NOTE**  
When this drawing is issued in uncontrolled CAD format it will be accompanied by a PDF version and is issued to enable the recipient to prepare their own documents / models / drawings for which they are solely responsible.  
The recipient should report all drawing errors, omissions and discrepancies to the architect. All dimensions should be checked on site by the contractor and such dimensions shall be the contractor's responsibility.

Allford Hall Monaghan Morris Limited accepts no responsibility or liability for:-  
- any use of this drawing by parties other than the party for whom it was prepared or for purposes other than those for which it was prepared  
- any alterations or additions to or discrepancies arising out of changes to the background information on which the drawings are based that was current at the time of issue, and which occur to that information after it has been issued by AHMM  
- any loss or degradation of the information held in this drawing resulting from the translation from the original file format to any other file format or from the recipient's reading of it in any other programme or any version of the programme other than that which was used to prepare it  
- the accuracy of survey information provided by others or for any costs, claims, proceedings and expenses arising out of reliance on such information  
- any scaling from this drawing other than by the local planning authority solely for the purposes of the planning application to which it relates

LOCATION



**ALLFORD HALL MONAGHAN MORRIS**  
ARCHITECTS Ltd  
MORELANDS, 5-23 OLD STREET LONDON EC1V 9HL  
TEL 020 7251 5261 FAX 020 7251 5123 WEB WWW.AHMM.CO.UK

job title  
**PROJECT HOLLOWAY**

drawing title / location  
**EXISTING SITE  
NORTHWEST ELEVATION - EXTERNAL**

drawn by	checked	scale	status
AC	LL	1:500@A1; 1:1000@A3	PLANNING

project	zone	source	classification	drawing no.	revision
17105	0	-	[01]	P203	P01