

8 Two-Tier
0 Standard Sheffield
0 Oversized Sheffield

4 Two-Tier
0 Standard Sheffield
0 Oversized Sheffield

138 Two-Tier
26 Standard Sheffield
10 Oversized Sheffield

PLOT C - Residential Parking	Two-tier stands	Standard Sheffield stands	Oversized Sheffield stands	Total
Minimum Required as per LP	235	44	15	294
Provided	80%	15%	5%	100%

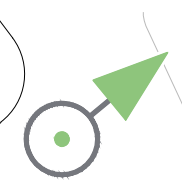
PLOT C - Class E	Two-tier stands	Standard Sheffield stands	Oversized Sheffield stands	Total
Minimum Required as per LBI	4	0	0	4
Provided	100%	0%	0%	100%

PLOT C - Women's Building	Two-tier stands	Standard Sheffield stands	Oversized Sheffield stands	Total
Minimum Required as per LBI	6	1	0	7
Provided	44%	56%	0%	100%

REV	DATE	COMMENT	APP
C	09.11.21	Updated Layout	ML
B	01.11.21	Updated Layout	ML
A	16.09.21	First Issue	ML

REVISION DETAILS		
DRAWING NO.		
2490-1130-T-034		
DRAWN	APPROVED	DATE
EP	ML	SEP 21
SCALE		REV
1:250 @ A3		C

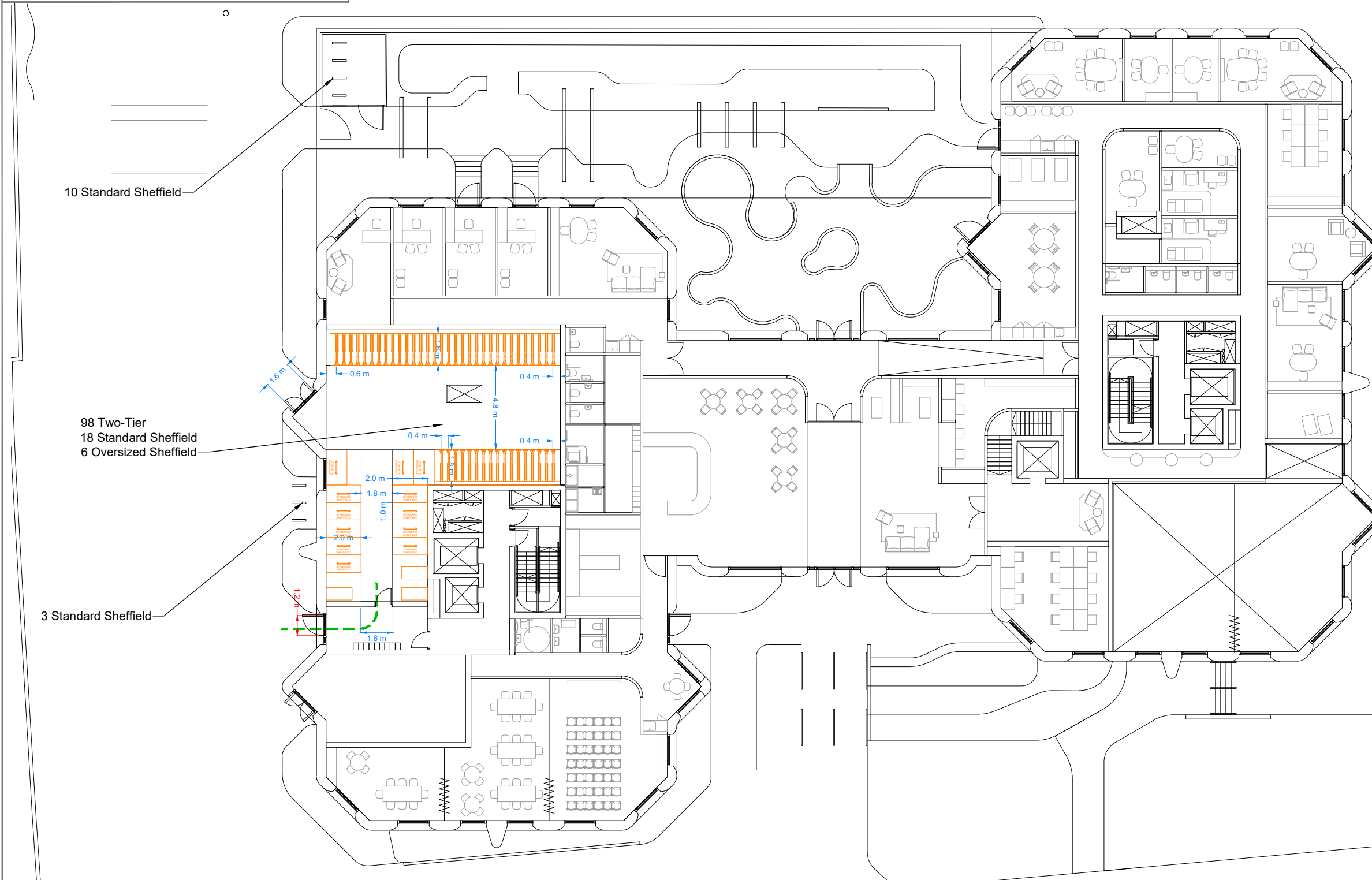




PLOT C - Residential Parking	Two-tier stands	Standard Sheffield stands	Oversized Sheffield stands	Total
Minimum Required as per LP	235	44	15	294
Provided	236 80%	44 15%	16 5%	296 100%

PLOT C - Class E	Two-tier stands	Standard Sheffield stands	Oversized Sheffield stands	Total
Minimum Required as per LBI	4	0	0	4
Provided	4 100%	0 0%	0 0%	4 100%

PLOT C - Women's Building	Two-tier stands	Standard Sheffield stands	Oversized Sheffield stands	Total
Minimum Required as per LBI	6	1	0	7
Provided	8 44%	10 56%	0 0%	18 100%



REV	DATE	COMMENT	APP
C	09.11.21	Updated Layout	ML
B	01.11.21	Updated Layout	ML
A	16.09.21	First Issue	ML

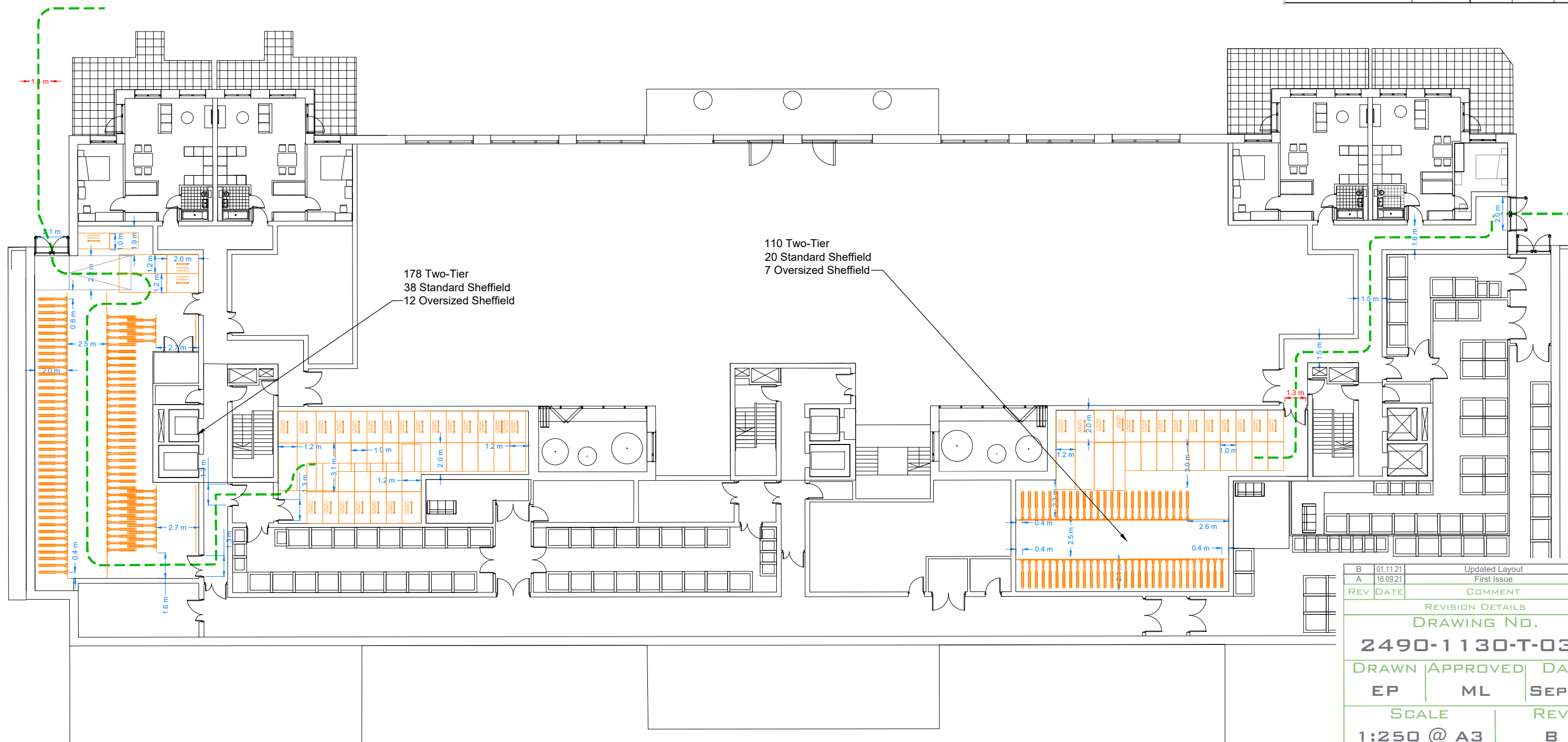
REVISION DETAILS		
DRAWING NO.		
2490-1130-T-035		
DRAWN	APPROVED	DATE
EP	ML	SEP 21
SCALE	REV	
1:250 @ A3	C	





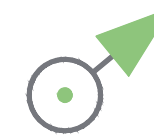
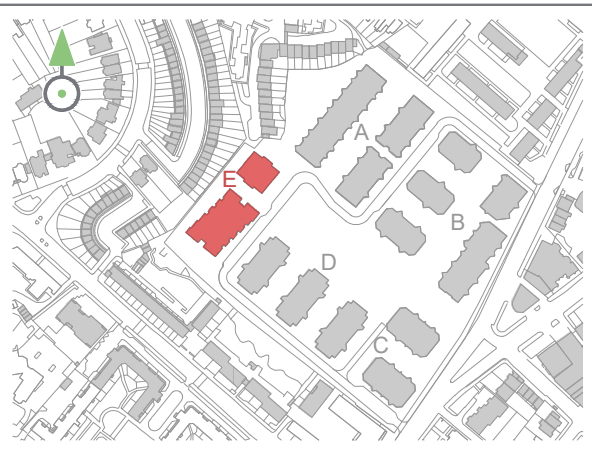
PLOT D - Residential Parking	Two-tier stands	Standard Sheffield stands	Oversized Sheffield stands	Total
Minimum Required as per LP	286	54	18	358
Provided	288	54	19	361
	80%	15%	5%	100%

PLOT D - Concierge	Two-tier stands	Standard Sheffield stands	Oversized Sheffield stands	Total
Minimum Required as per LBI	0	4	0	4
Provided	0	4	0	4
	0%	100%	0%	100%



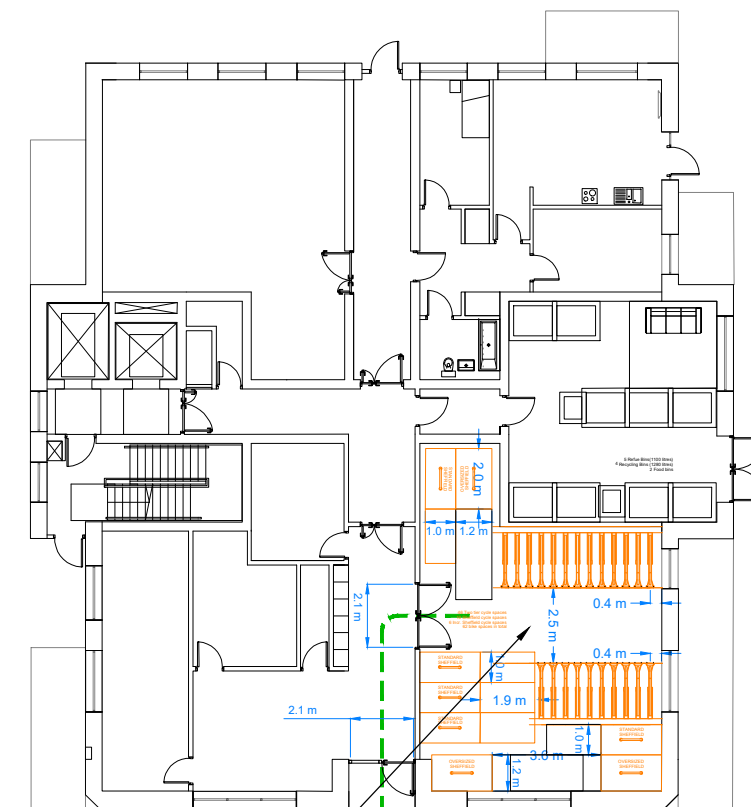
B	01.11.21	Updated Layout	ML
A	16.09.21	First Issue	ML
REV	DATE	COMMENT	APP
REVISION DETAILS			
DRAWING NO.			
2490-1130-T-036			
DRAWN		APPROVED	DATE
EP		ML	SEP 21
SCALE		REV	
1:250 @ A3		B	





PLOT D - Residential Parking	Two-tier stands	Standard Sheffield stands	Oversized Sheffield stands	Total
Minimum Required as per LP	119	22	7	149
Provided	118	24	12	154
	77%	16%	8%	100%

72 Two-Tier
14 Standard Sheffield
6 Oversized Sheffield



46 Two-Tier
10 Standard Sheffield
6 Oversized Sheffield

REV	DATE	COMMENT	APP
B	01.11.21	Updated Layout	ML
A	16.09.21	First Issue	ML

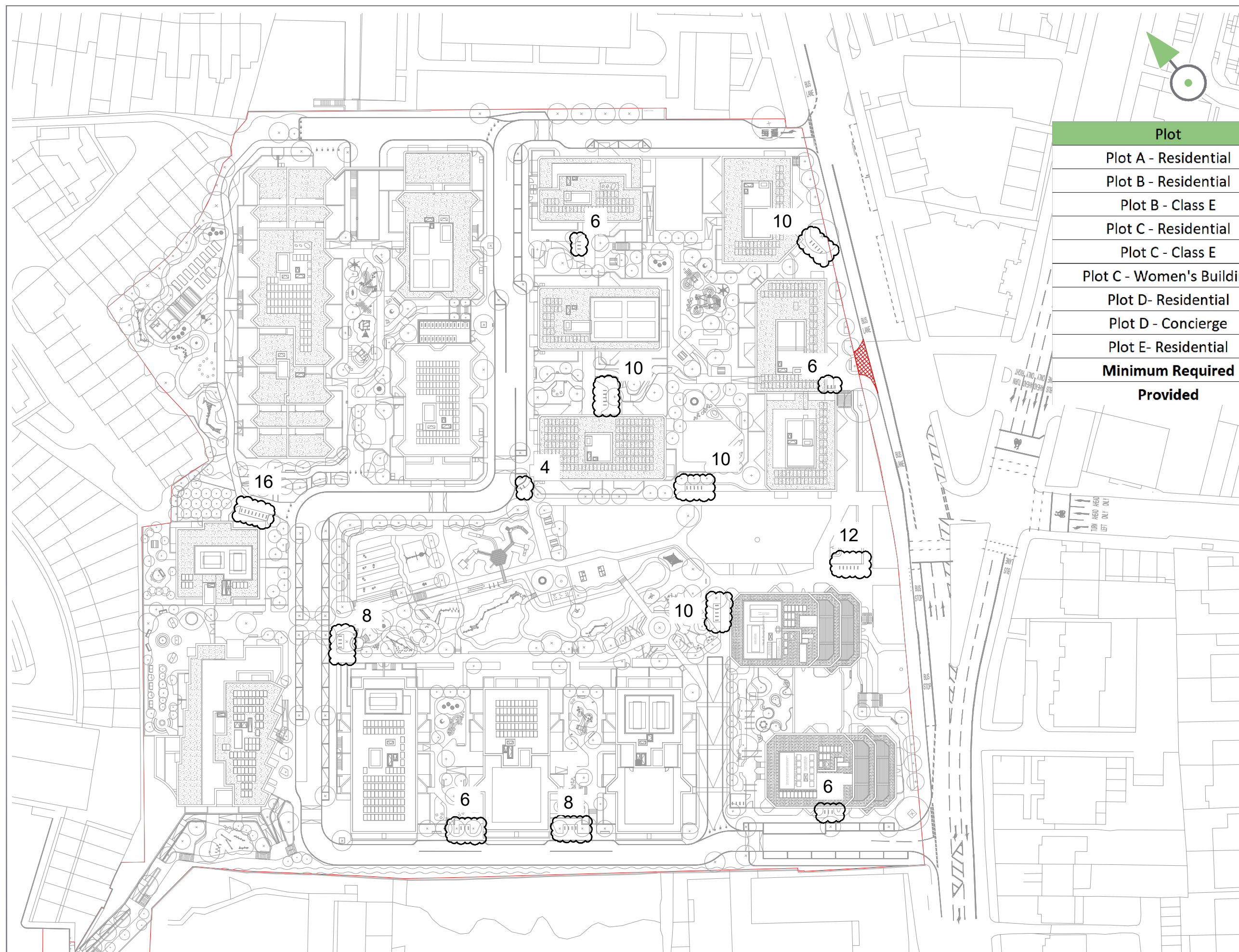
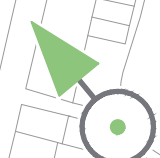
REVISION DETAILS
DRAWING NO.

2490-1130-T-037

DRAWN	APPROVED	DATE
EP	ML	SEP 21

SCALE	REV
1:250 @ A3	B





Plot	Long Stay Cycle Parking
Plot A - Residential	7
Plot B - Residential	10
Plot B - Class E	16
Plot C - Residential	5
Plot C - Class E	4
Plot C - Women's Building	16
Plot D - Residential	6
Plot D - Concierge	4
Plot E - Residential	4
Minimum Required	72
Provided	112

REV	DATE	COMMENT	APP
B	26.10.21	Layout updated	TM
A	13.10.21	First Issue	TM

REVISION DETAILS		
DRAWING NO.		
2490-1130-T-042		
DRAWN	APPROVED	DATE
GSF	ML	OCT 21
SCALE		REV
1:1000 @ A3		B

CLIENT
PEABODY
PROJECT
HOLLOWAY PRISON

DRAWING TITLE
CYCLE STORAGE PROVISION



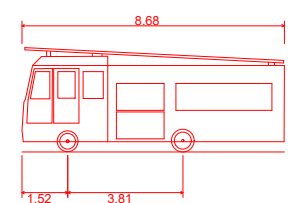
APPENDIX I

SWEPT PATH ANALYSIS (OPERATIONAL PHASE)



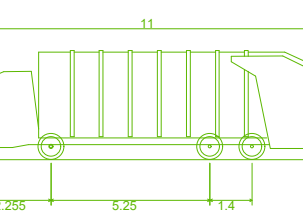


DB32 Fire Appliance



DB32 Fire Appliance
Overall Length 8.680m
Overall Width 2.180m
Overall Body Height 3.452m
Min Body Ground Clearance 0.337m
Max Track Width 2.121m
Lock to lock time 6.00s
Kerb to Kerb Turning Radius 7.910m

Islington Refuse Vehicle

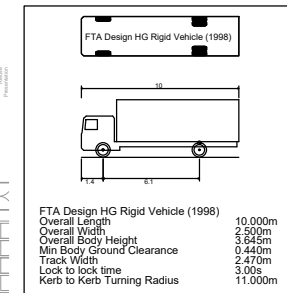
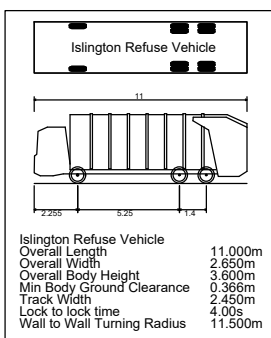
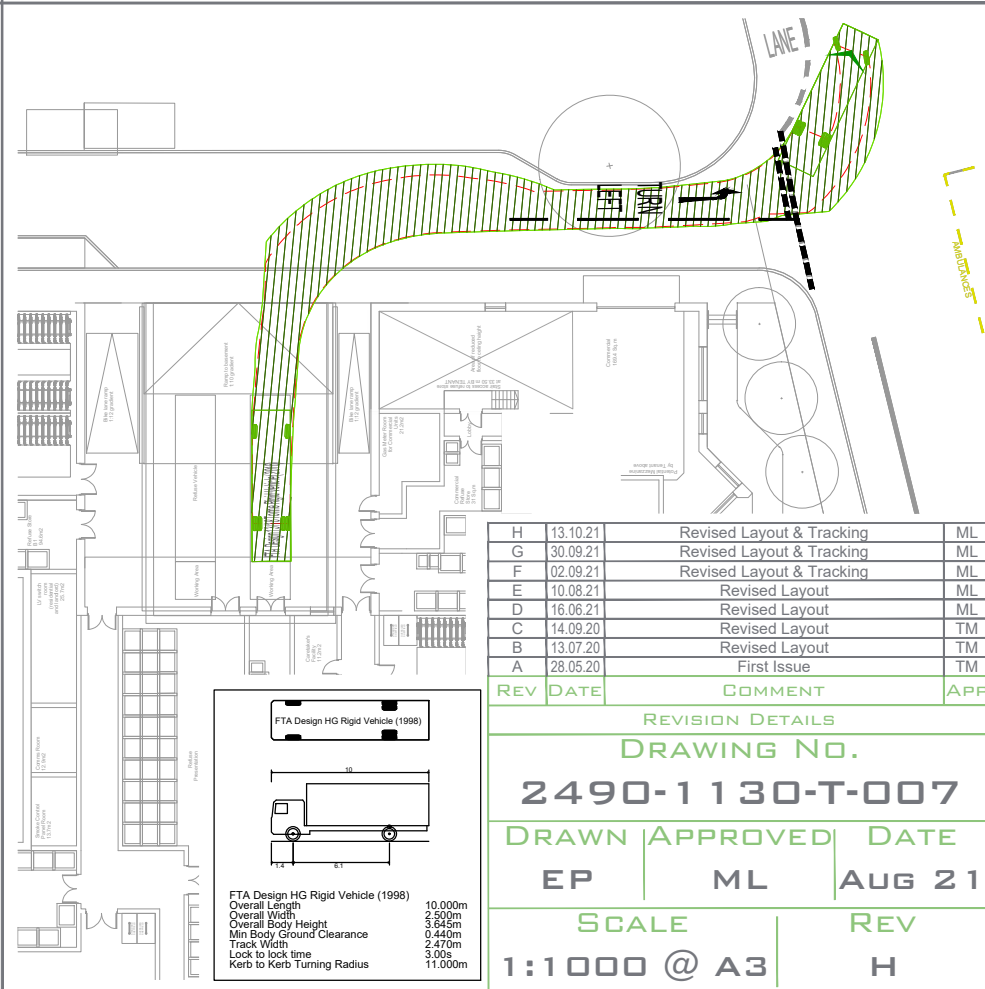
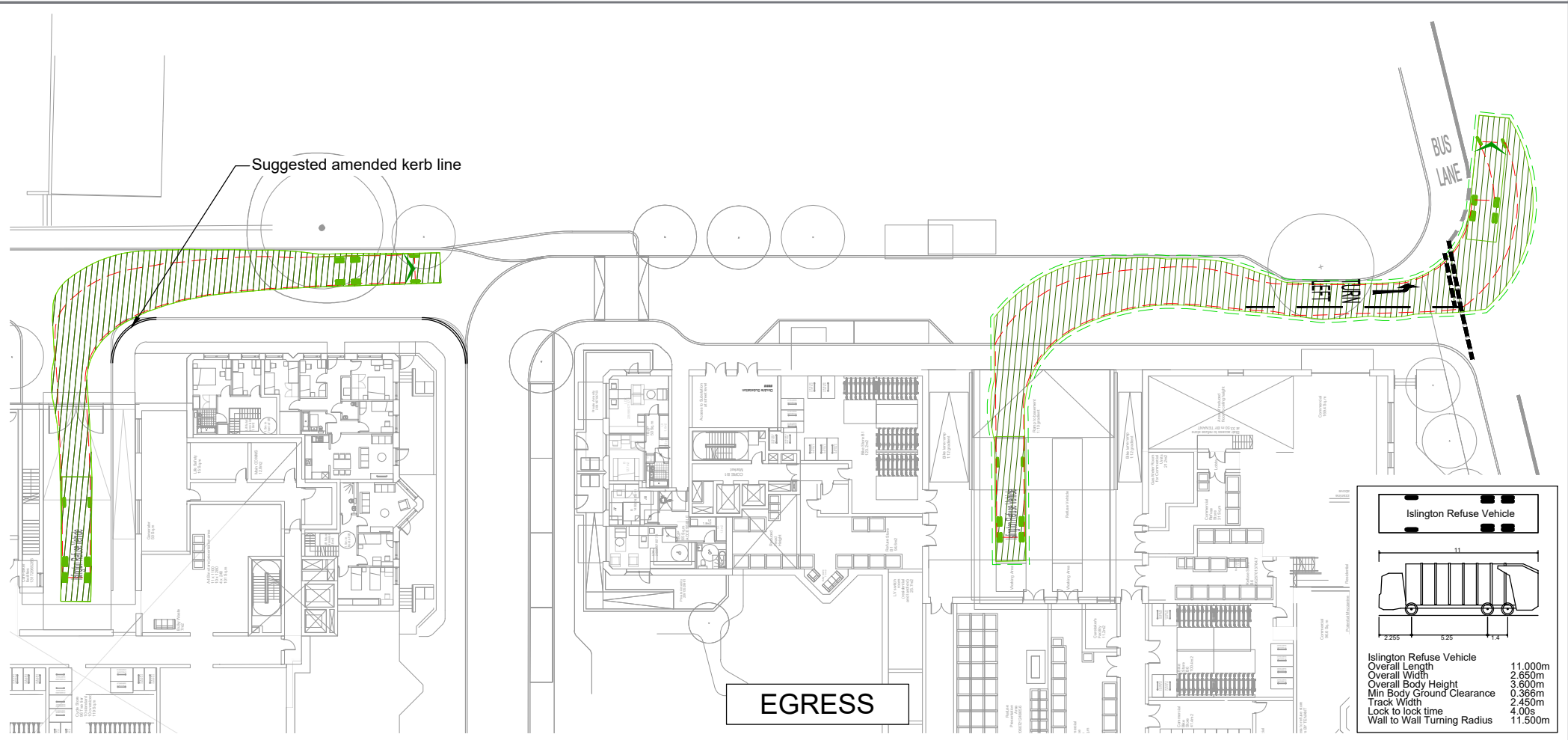
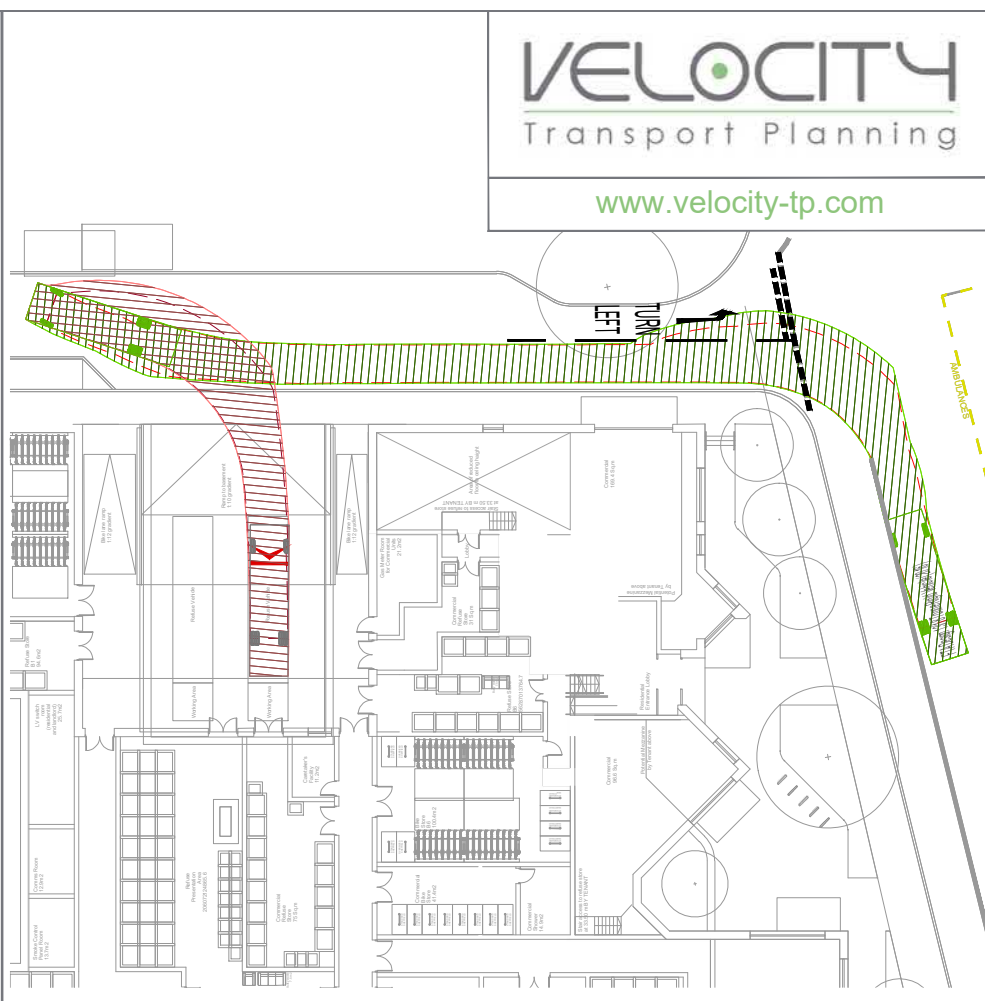
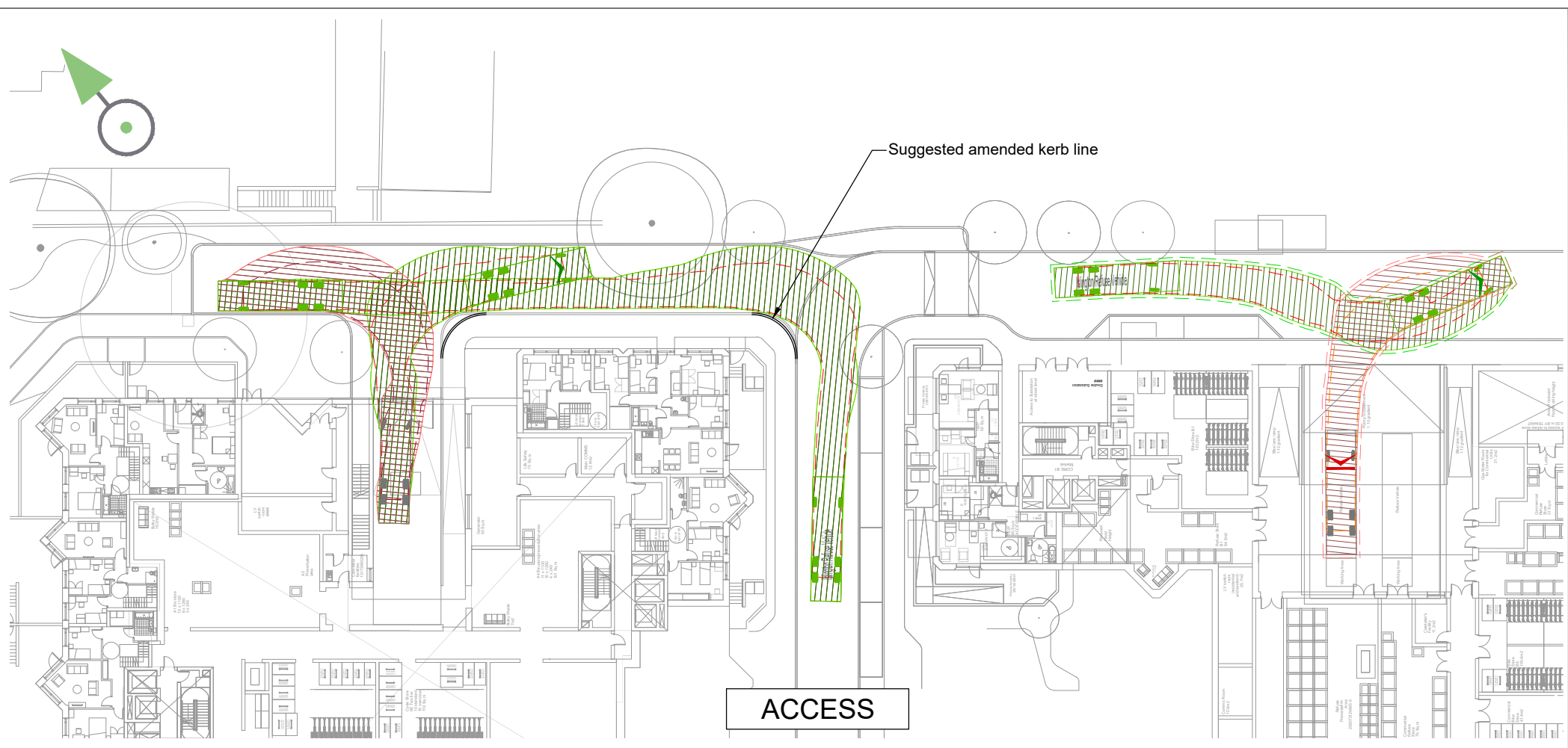


Islington Refuse Vehicle
Overall Length 11.000m
Overall Width 2.650m
Overall Body Height 3.600m
Min Body Ground Clearance 0.366m
Track Width 2.450m
Lock to lock time 4.00s
Wall to Wall Turning Radius 11.500m

REV	DATE	COMMENT	APP
H	13.10.21	Revised Layout	ML
G	30.09.21	Revised Layout	ML
F	26.08.21	Revised Layout	ML
E	10.08.21	Revised Layout	ML
D	16.06.21	Revised Layout	ML
C	14.09.20	Revised Layout	TM
B	13.07.20	Revised Layout	TM
A	28.05.20	First Issue	TM

REVISION DETAILS		
DRAWING NO.		
2490-1130-T-006		
DRAWN	APPROVED	DATE
EP	ML	AUG 21
SCALE	REV	
1:1000 @ A3	H	





REV	DATE	COMMENT	APP
H	13.10.21	Revised Layout & Tracking	ML
G	30.09.21	Revised Layout & Tracking	ML
F	02.09.21	Revised Layout & Tracking	ML
E	10.08.21	Revised Layout	ML
D	16.06.21	Revised Layout	ML
C	14.09.20	Revised Layout	TM
B	13.07.20	Revised Layout	TM
A	28.05.20	First Issue	TM

REVISION DETAILS		
DRAWING NO.		
2490-1130-T-007		
DRAWN	APPROVED	DATE
EP	ML	AUG 21
SCALE		REV
1:1000 @ A3		H



APPENDIX J

ATZ PHOTOS



ROUTE 1



Picture 1



Picture 2



Picture 3



Picture 4



Picture 5



Picture 6



Picture 7



Picture 8



Picture 9



Picture 10



Picture 11



Picture 12



Picture 13



Picture 14

ROUTE 2



Picture 15



Picture 16



Picture 17



Picture 18



Picture 19



Picture 20



Picture 21



Picture 22



Picture 23



Picture 24



Picture 25



Picture 26



Picture 27



Picture 28



Picture 15



Picture 16



Picture 17



Picture 18



Picture 19



Picture 20