

HOLLOWAY PARK *community*

PROJECT UPDATE July 2025



Dear Neighbours,

Introducing Tsion – Your New Community Liaison Officer

We are pleased to introduce Tsion Gebru as the new Community Liaison Officer at Holloway Park. Tsion is a local resident who joins us following her apprenticeship with OHOB and brings a strong commitment to supporting our neighbours and building positive connections within the community. She will be your first point of contact for any questions, concerns, or ideas about Holloway Park.



Y10 Visit - City of London Academy Highgate Hill

Our team recently visited City of London Academy Highgate Hill to support Year 10 students as they prepare for upcoming work experience placements. We conducted mock interviews at the school, helping students practice their interview skills, build confidence, and get ready for real-world opportunities. It was a fantastic chance to engage with local young people and offer practical guidance to support their future success.



Next Drop-In Session
will be the **6th of August**
between **17:00pm to**
19:00pm

Green Skills Hub - Available for Community Use

Did you know our Green Skills Hub is available for residents and groups to use free of charge? We're proud to offer this flexible space to support community activities such as:

- Meetings and workshops
- Book clubs
- Yoga or Pilates classes
- Training sessions
- Other local interest groups



If you would like to find out more and make a booking, please get in touch.

Consultation for phases 2 & 3

Scan the QR code below to join the mailing list and stay informed about future updates and to sign up for our next workshop.

Or email

info@hollowayparkconsultation.co.uk



Puppeteer at Holloway Park

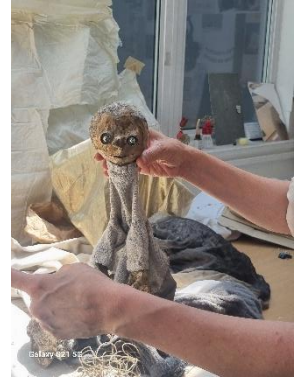
While building new homes at Holloway Park, we're making great use of spare space in the old visitor centre to support local creatives and organisations.

One of our most unusual occupants is Helen Ainsworth, an Islington-based puppeteer. Helen uses her workshop here to create projects for children and adults. Currently she is working on a pop video with local mums.

Helen is a co-founder with another local mum of the Cut Moose Charity based Hilldrop Community Centre, together they run various community projects. The Hilldrop Tales project collaborates with local residents of Hilldrop Crescent collecting their memories and stories working together to create a podcast and a performance giving them a voice.

We're delighted to have Helen as our puppeteer in residence at Holloway Park!

Read more about Helen and her other projects on our website.



www.helenandjohn.co.uk

Clocktower festival – Join Us There!

We're excited to share that Holloway Park will be attending the Clocktower Festival on Saturday 3rd August. Visit our stall to meet the team, ask questions and learn about various courses and events.

PROGRESS ON SITE

- Block C1: Level 12 Decking
- Block C2: Roof Slab
- Block D1 - D3: Concrete Frame Completed
- Block E1: Roof Slab
- Block E2: Concrete Frame Completed

UPCOMING WORK

- Block D: Scaffolding, brickwork and SFS

CONTACT DETAILS

For any queries that you'd like to discuss, please contact us at:

HOLLOWAY PARK



Parkhurst Road, N7 0NU



0333 6660104



info@hollowayparkcommunity.co.uk



hollowayparkcommunity.co.uk

CONSTRUCTION WORKING HOURS

0800 – 1800 Weekdays 0800 – 1300 Saturdays

If you wish to speak to the Council about this project, please contact Islington Construction Monitoring Team:

Lee – 020 7527 7272 or islington.gov.uk/ReportASB



LONDON
SQUARE
An Aldar Company