

# HOLLOWAY PARK COMMUNITY

Project Update – March 2026

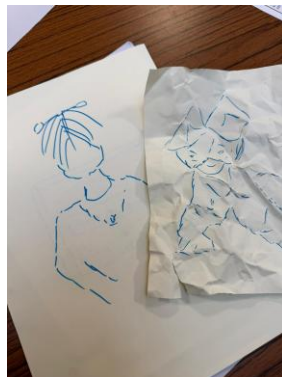
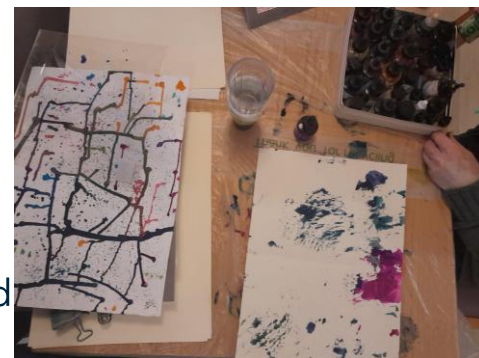
**Dear Neighbours,**

## ART CLASS IN THE COMMUNITY

Helen, resident puppeteer at Holloway Park Green Skills Hub, has been busy delivering engaging art workshops for local residents on our behalf. Most recently, she led a series of sessions at Cutbush House Care Home and Goodinge Community Centre bringing creativity and connection into the heart of the community.

Her workshops are designed to support cognitive function, boost self-esteem and reduce isolation. Residents have created some fantastic pieces, and the sessions are always filled with energy, laughter, and enjoyment.

Helen is able to extend this valuable work beyond the site and into the wider community—making a real difference and bringing people together through art. Please use the contact details for Holloway Park Community on page 2 of this newsletter to find out more..



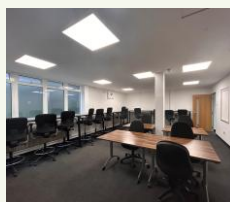
Drop-In Sessions

6th of May between 14:30  
to 16:30  
&  
3<sup>rd</sup> of June between 17:00  
to 19:00

## GREEN SKILLS HUB - AVAILABLE FOR COMMUNITY USE

Did you know our Green Skills Hub is available for residents and groups to use free of charge? We're proud to offer this flexible space to support community activities such as:

- Meetings and workshops
- Book clubs
- Yoga or Pilates classes
- Training sessions
- Other local interest groups



If you would like to find out more and make a booking, please get in touch.

## JOIN OUR WHATSAPP CHANEL!

Scan the QR code to receive updates, news, and important information directly on your phone.

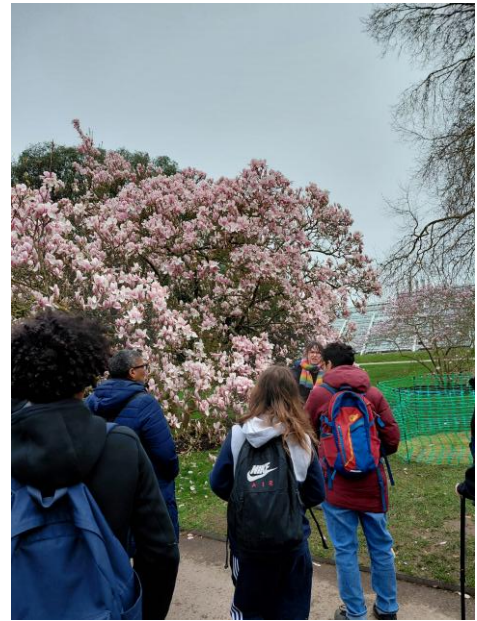


## LOCAL COMMUNITY VISIT KEW GARDENS

Kew Gardens have been collaborating with Peabody on the Holloway Park development on our plans for the public park and green spaces here. As part of this partnership a group of local people have been to visit Kew Gardens for a workshop on horticulture. The group comprised of Horticulture students from Beacon High School together with volunteers from the Octopus plant nursery.

This group met the gardeners at Kew to get advice on pollination and other gardening tips together with learning a bit about the history and work of Kew. There was lots to see in the walk around Kew as the spring flowers were coming out and an informative good time was had by all.

To continue this partnership with the Tufnell Park community, Kew will be coming to meet this group in July in Islington to give more advice on growing at the plant nursery here in Islington.



### PROGRESS ON SITE

- All blocks: Concrete Frame Completed
- Block D1 – Scaffold completed to roof
- Block D1 – D3: Internal fit out up to level 5 and façade works in progress
- C1 & C2: façade works started, internal works scaffolding and external wall systems in progress
- Block E2: external wall systems

### UPCOMING WORK

- Block D2 - D3: Scaffolding, brickwork and SFS, as well as internal fit out
- Marketing Suite: Delivery of the modular marketing suite building will take place over **27-28 April**. Delivery will take place at night to minimise traffic disruption

### CONTACT DETAILS

For any queries that you'd like to discuss, please contact us at:

#### HOLLOWAY PARK



Parkhurst Road, N7 0NU



0333 6660104



info@hollowayparkcommunity.co.uk



hollowayparkcommunity.co.uk

### CONSTRUCTION WORKING HOURS

0800 – 1800 Weekdays 0800 – 1300 Saturdays

If you wish to speak to the Council about this project, please contact Islington Construction Monitoring Team:

Lee – 020 7527 7272 or [islington.gov.uk/ReportASB](https://www.islington.gov.uk/ReportASB)



LONDON SQUARE  
An Alder Company